



neocase

Healthcare Furniture
Solutions

Groupe Lacasse presents Neocase, 100% reconfigurable modular casework. Neocase is engineered to exacting specifications, making it the superior alternative to built-in millwork. In addition to lower ownership and maintenance costs, Neocase offers the most environmentally responsible solution available. It's the smartest possible investment for applications within healthcare environments such as **laboratories, pharmacies, emergency** and **procedure rooms**.

The pharmacy environment depicted here exemplifies the maximum utilization of space with flexible yet durable storage and workflow solutions.



EXPERIENCE THE CARE



Wall-mounted cabinets with adjustable shelves and sloped top



Wall-mounted shelving with sloped shelves



Base cabinets with pharmacy drawers and dividers

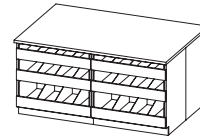


Counter-height work surfaces

Neocase modular casework offers unlimited possibilities for making the most of new workspaces and reconfiguring existing ones. Here are some configuration examples:

Collaborative Island & Organized Pharmacy Storage

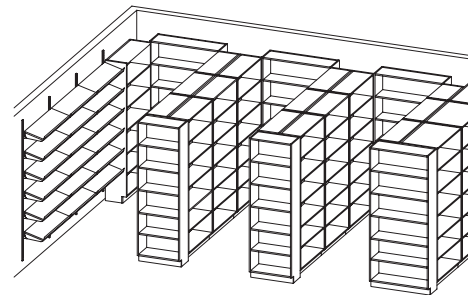
List Price: \$12,814



- | | |
|-----------------------------|--|
| Base cabinets - 35"H | - Three drawers with plastic dividers
- Kick plates 4" (100 mm) |
| Countertops | - HPL |

Efficient Storage & Picking Area

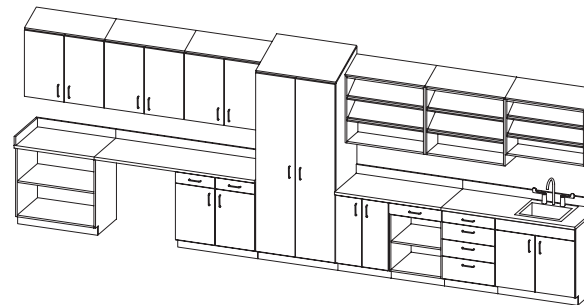
List Price: \$28,064



- | | |
|------------------------------|--|
| Tall cabinets | - Adjustable shelves
- Kick plates 4" (100 mm) |
| Wall-mounted shelving | - Adjustable shelves
- Sloped shelves
- Wall-mounted rails |

Counter Area with Sink

List Price: \$15,192



- | | |
|-------------------------------------|---|
| Base cabinets - 35"H | - Doors
- Split drawers and doors
- Four drawers
- Kick plates 4" (100 mm) |
| Wall-mounted cabinets | - Sloped tops
- Doors
- Open adjustable shelving |
| Countertops and backsplashes | - HPL |
| Accessories | - Faucet
- Stainless steel sink |